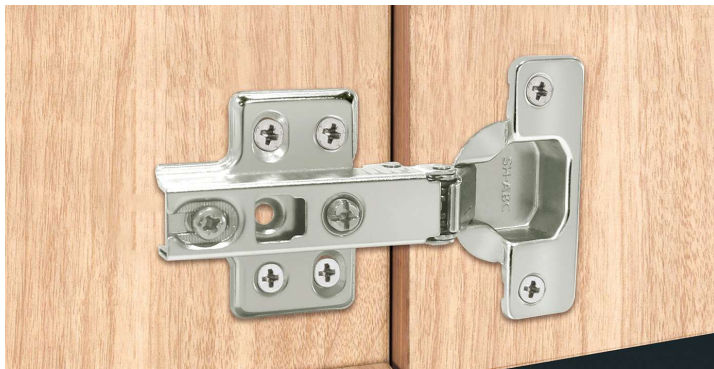
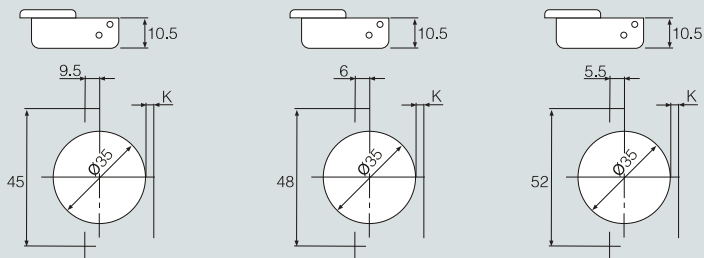


S83 铰链 Hinge



- 开启角度: 105度
- 铰杯厚度: 10.5毫米
- 铰杯直径: 35毫米
- 面板(K)尺寸: 3毫米-7毫米
- 材质: 铁镀镍
- 门可选用板厚: 14毫米-20毫米
- Opening angle: 105°
- Depth of hinge cup: 10.5mm
- Diameter of hinge cup: 35mm
- Drilling distance on the door(K): 3-7mm
- Material: cold rolled steel, nickel plated
- Range of door thickness: 14-20mm

铰杯种类 Hinge cup types

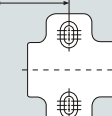


可配底座 Plate

序号 No	名称 Item no.	H值 H Value	孔型/安装尺寸L Hole type/Mounting dimension	类型 type
1	J2/822/823	H=0/2/3	两孔two holes/37mm	普通Normal
2	I1S/843/84-7	H=0/3/7	四孔four holes/37mm	普通Normal
3				

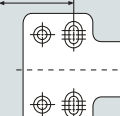
安装尺寸L(Mounting dimension L)

侧板
Side board
边沿



安装尺寸L(Mounting dimension L)

侧板
Side board
边沿



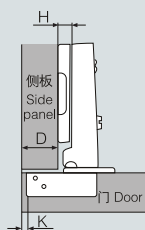
S83系列(普通型)自关铰链(两段力)功能图 S83 Installation dimensions (Two way)

D: 盖位计算值表 Overlay
A: 间隙位计算值表 Gap



S83A 全盖 Full overlay

$$H = 13 + K - D$$

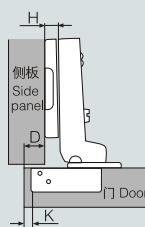


D \ K	3	4	5	6	7
0	16	17	18	19	20
2	14	15	16	17	18
4	12	13	14	15	16



S83B 半盖 Half overlay

$$H = 4 + K - D$$

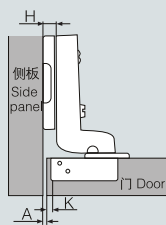


D \ K	3	4	5	6	7
0	7	8	9	10	11
2	5	6	7	8	9
4	3	4	5	6	7



S83C 内嵌 Insert

$$H = -4 + K + A$$



A \ K	3	4	5	6	7
0	1	0	-1	-2	-3
2	3	2	1	0	-1
4	5	4	3	2	1